

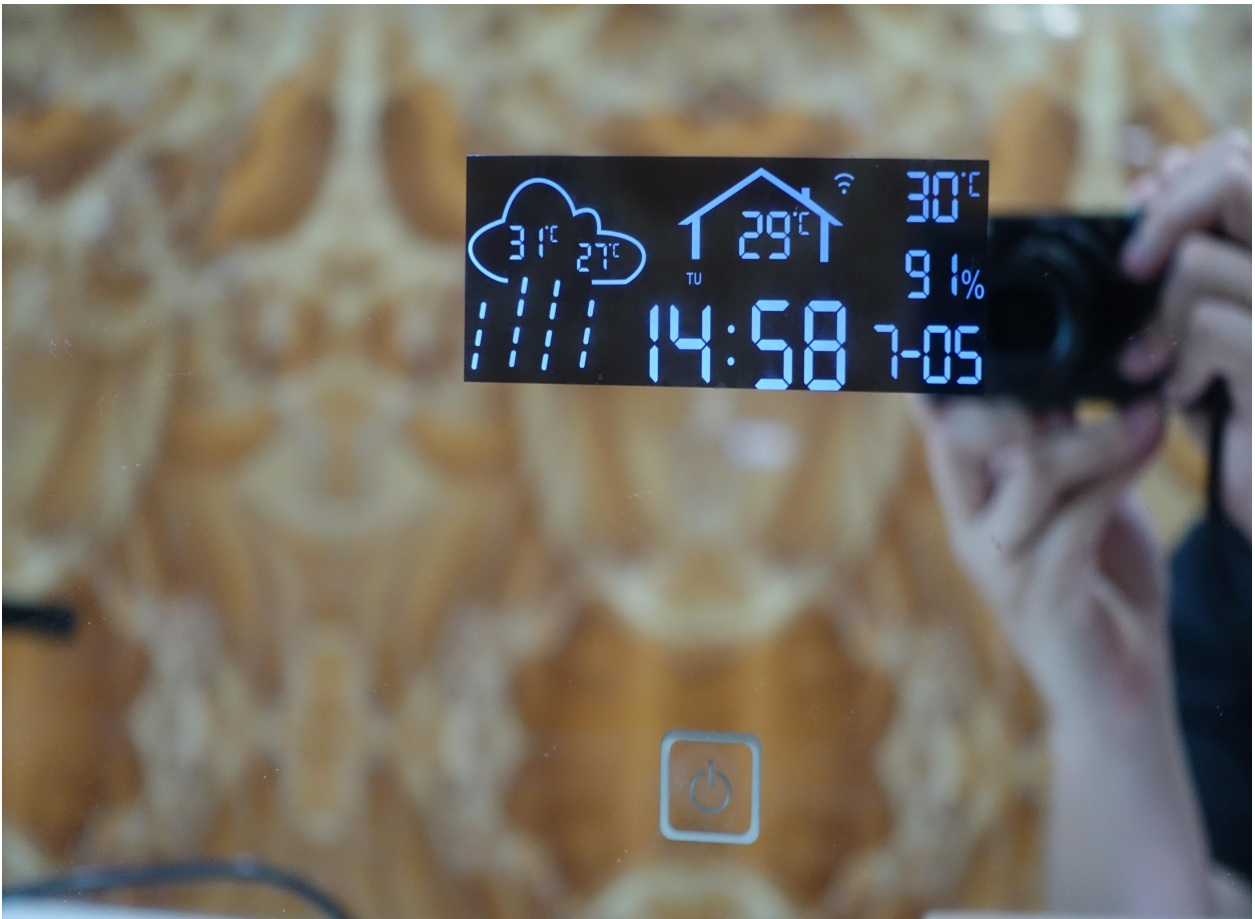
product name

weather forecast

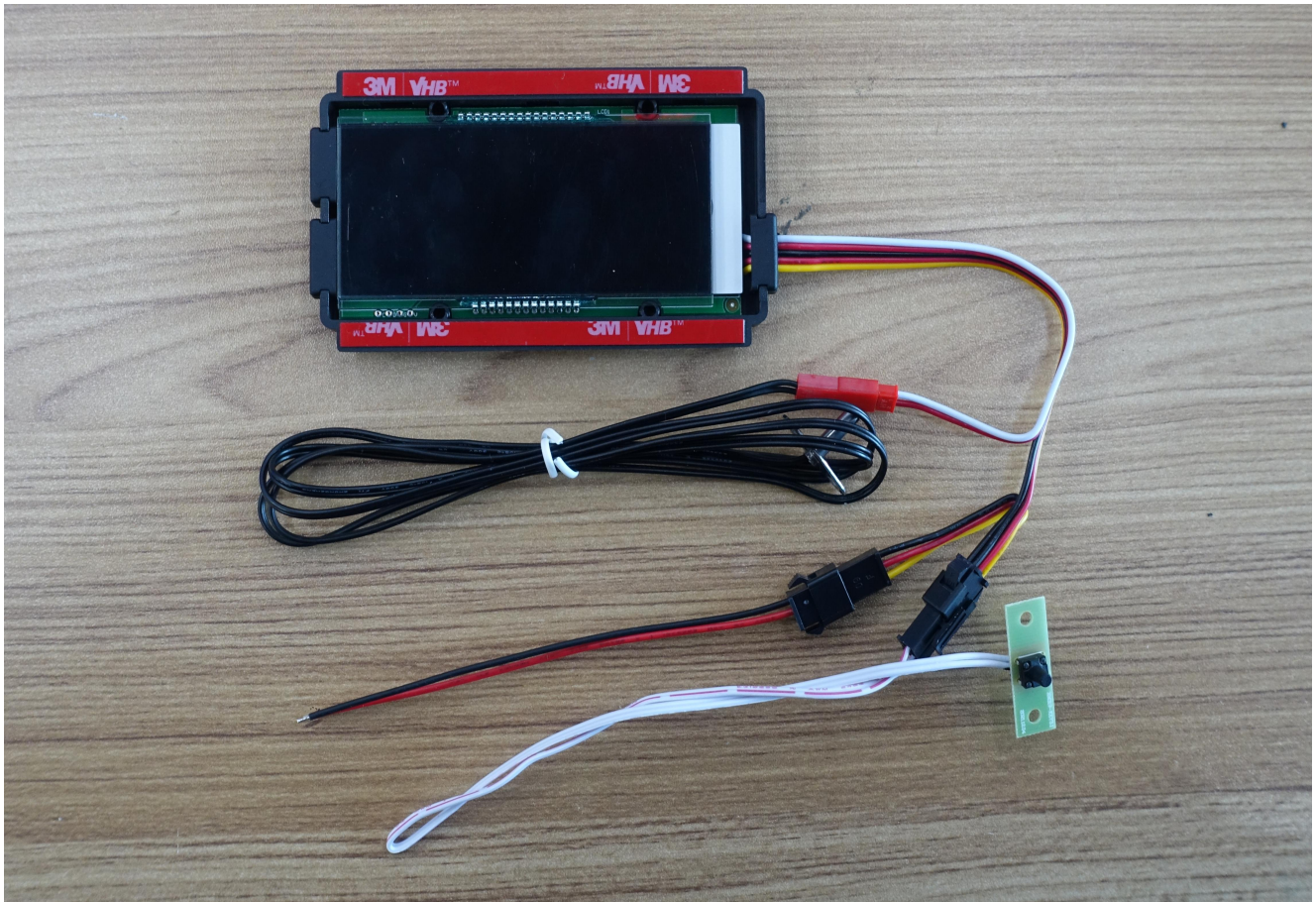
product model

XM8635

Renderings



actual picture



## I. Technical Specifications

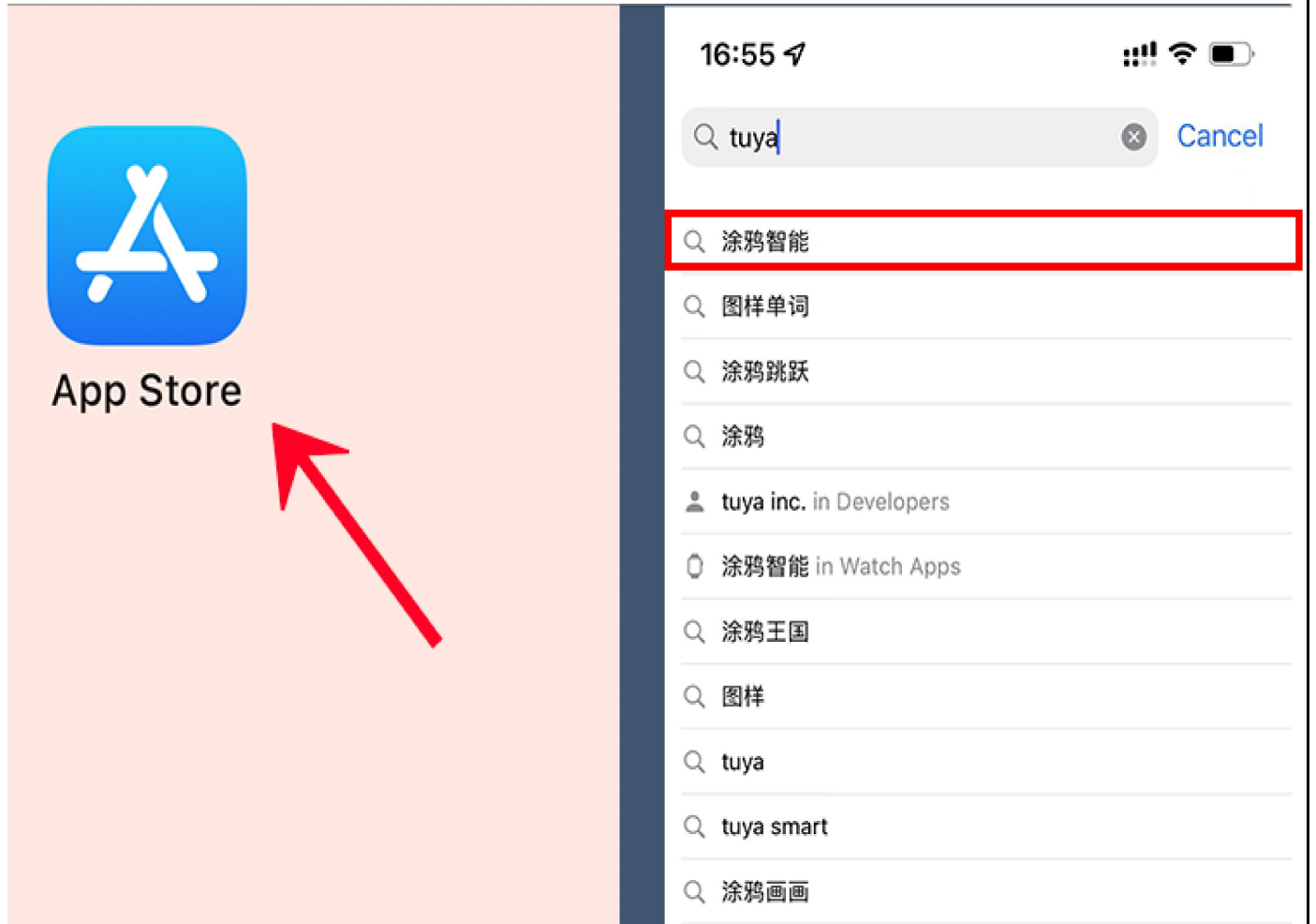
project	performance parameter
operating voltage	DC12-24V
incoming current	200ma (Max)
screen size	86mm*35mm( L*W)

## II. Brief introduction of work

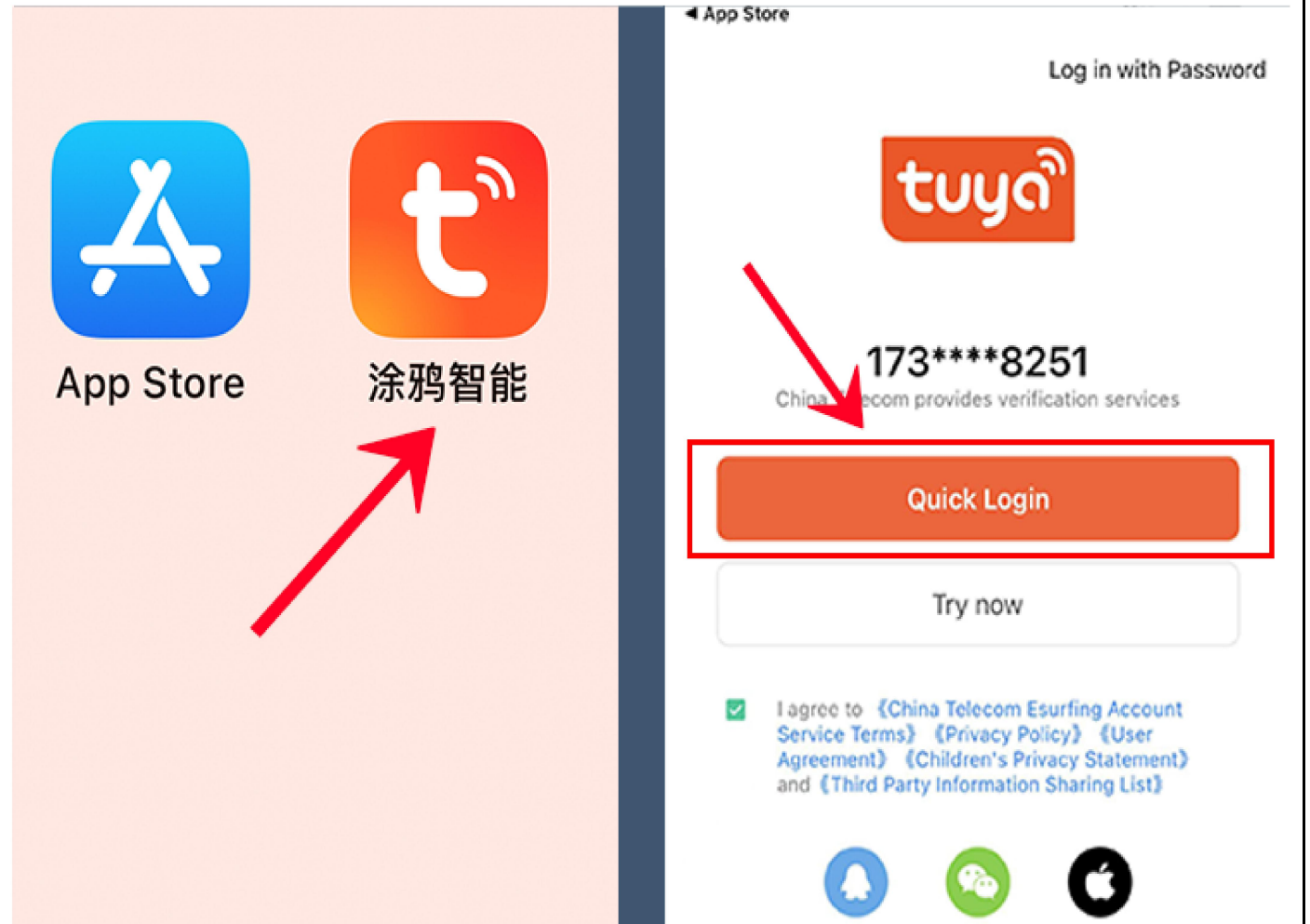
### Operating instructions:

1. Use with touch switch
2. Use with touch switch

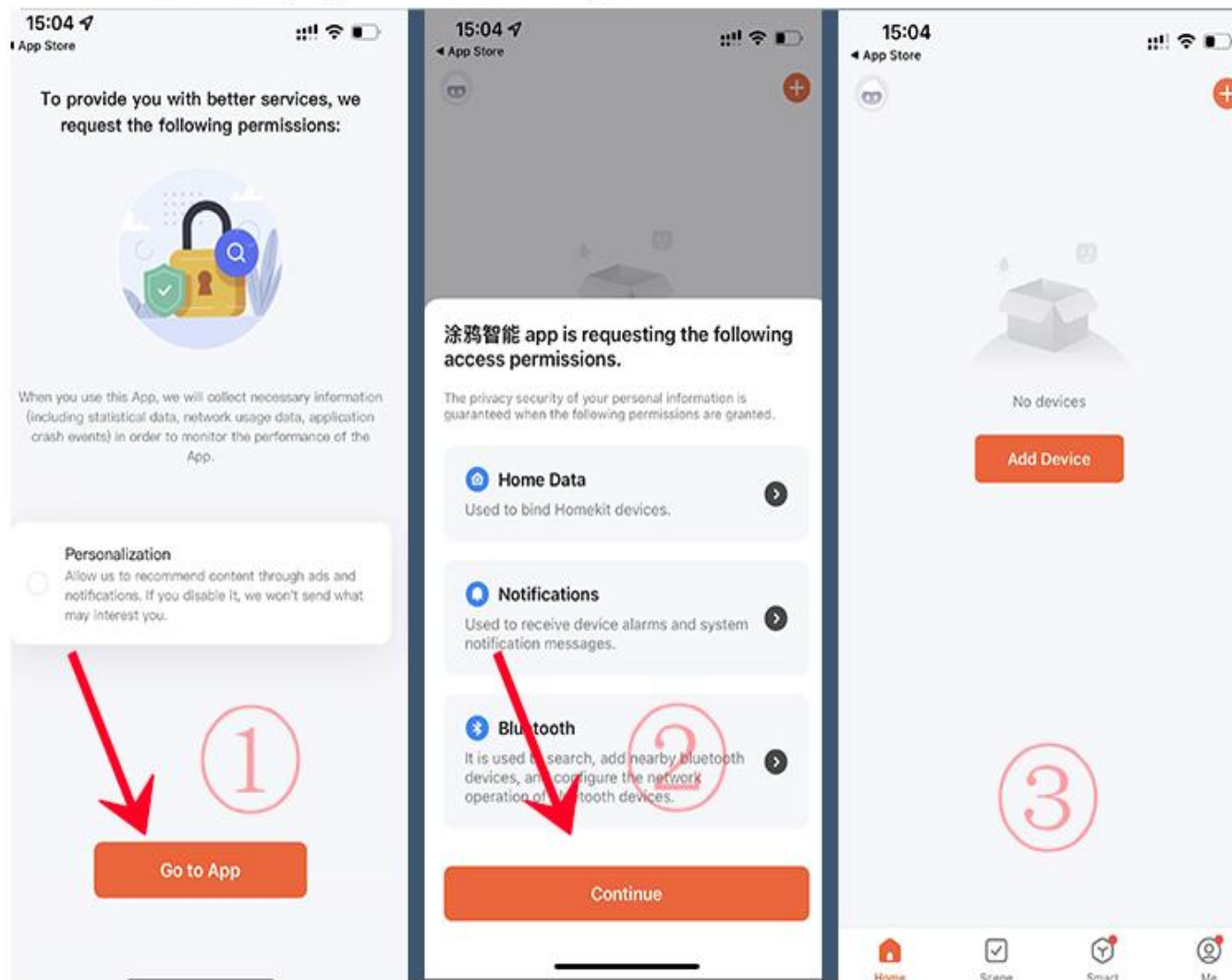
1. The first step is to search for Graffiti Intelligence in the application store and download and install it.



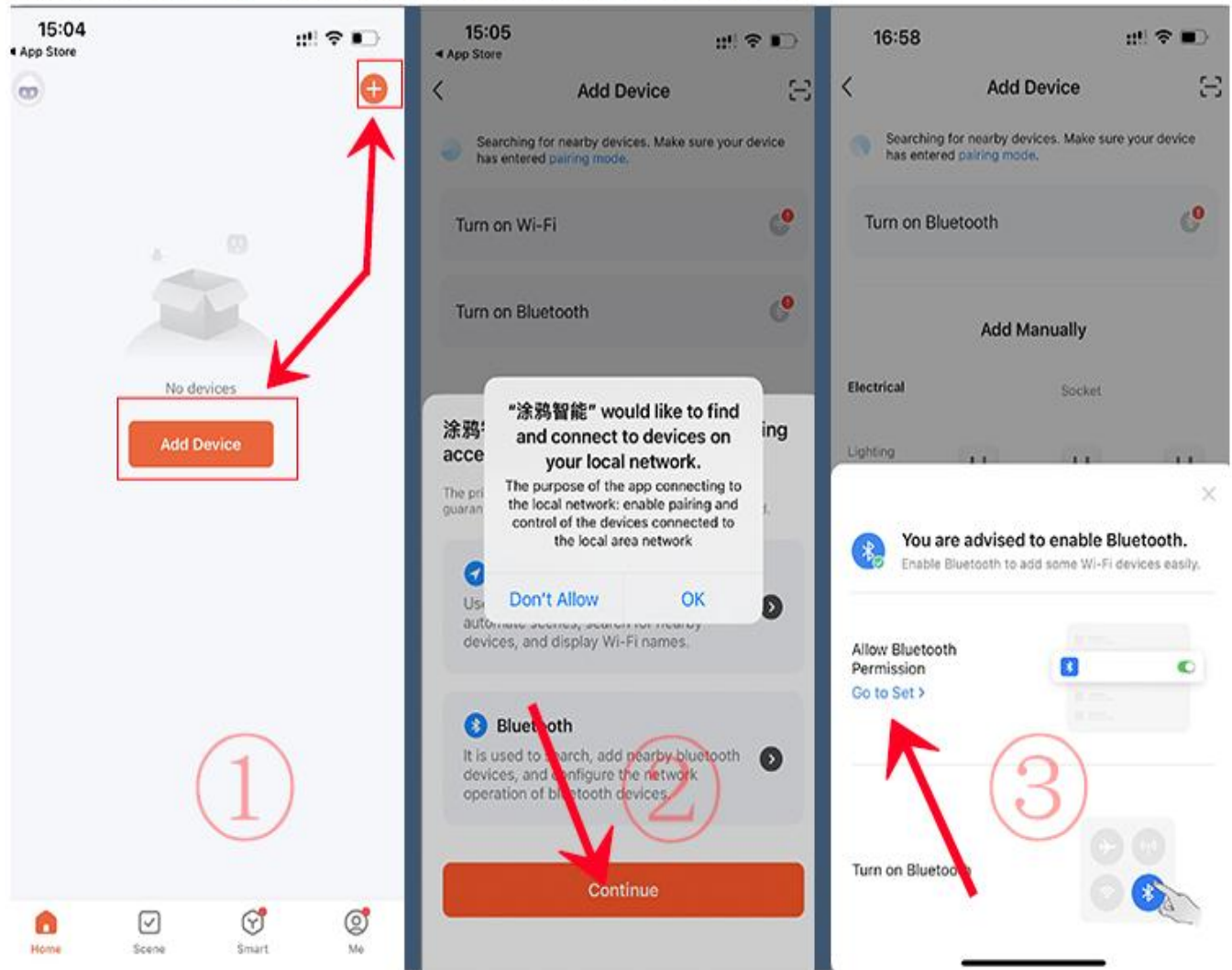
2. After installation, open the Graffiti Intelligence APP, register your account and log in.




3. Click "Enter App" ①, and then click "Continue" ② to enter the homepage interface ③.



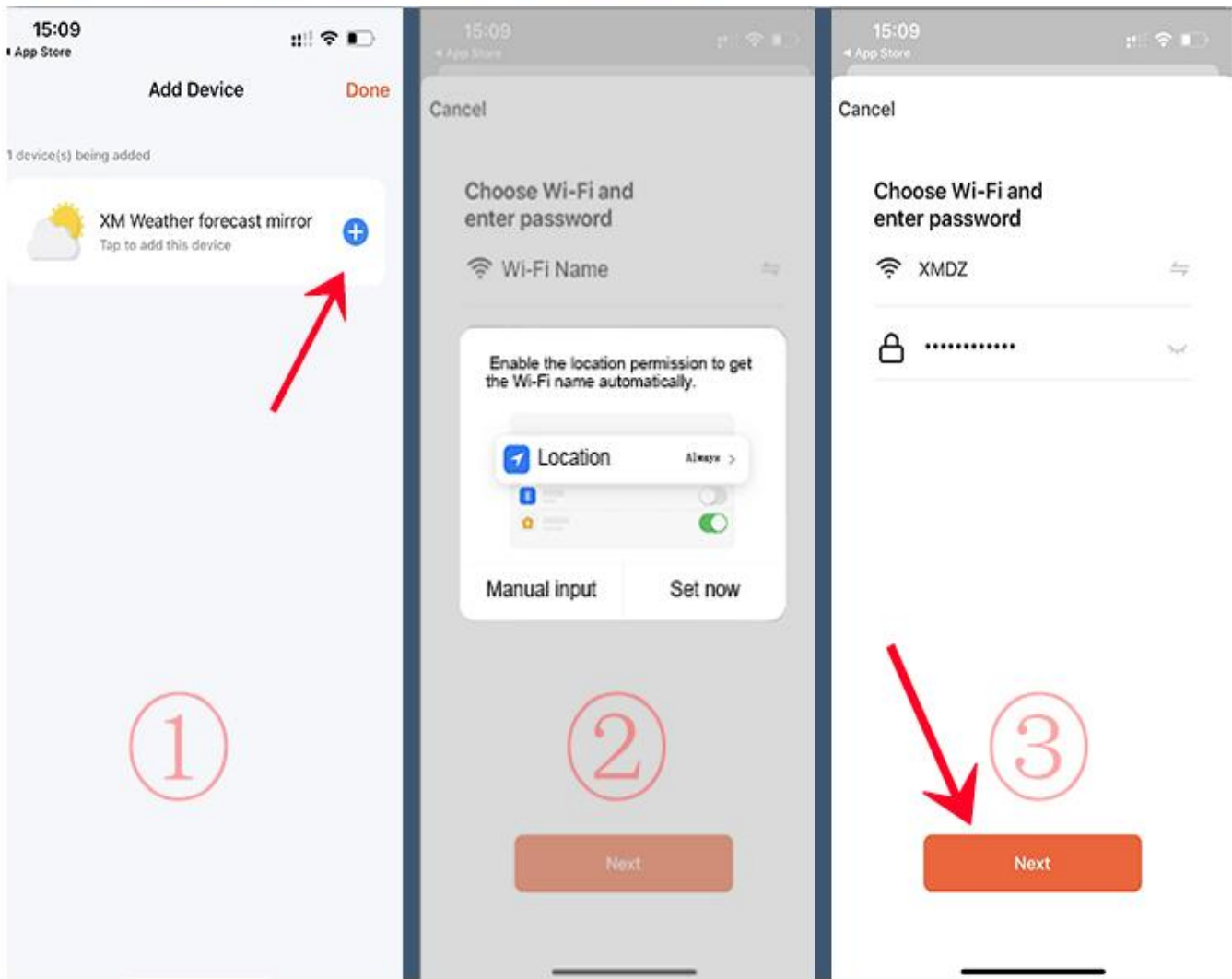
4. After successfully registering and logging in, click the "+" sign at the top right or click "Add Device" ①, click "OK" and "Continue" ②, allow Bluetooth permission and turn on Bluetooth ③, and add discovered devices.



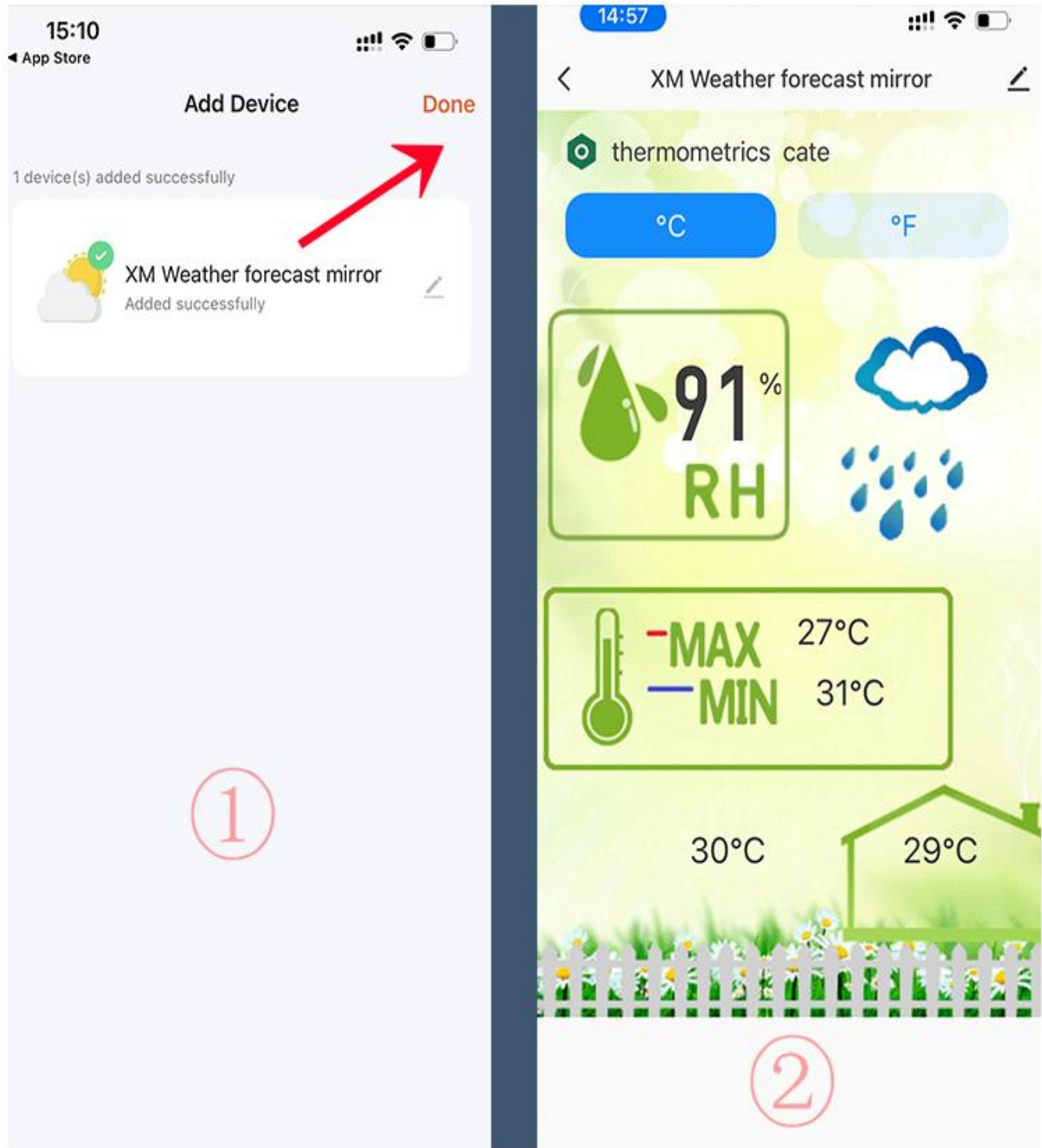
5. Press and hold the touch switch or touch switch for 3s. After the WIFI  icon in the weather forecast screen jumps, it can be added intelligently through graffiti.



6. Click Add Device ①, set open position permission ②, get Wi-Fi and password, click Next, and wait for the addition ③ (you can also manually select Wi-Fi, enter password, and click Next, and wait for the addition )



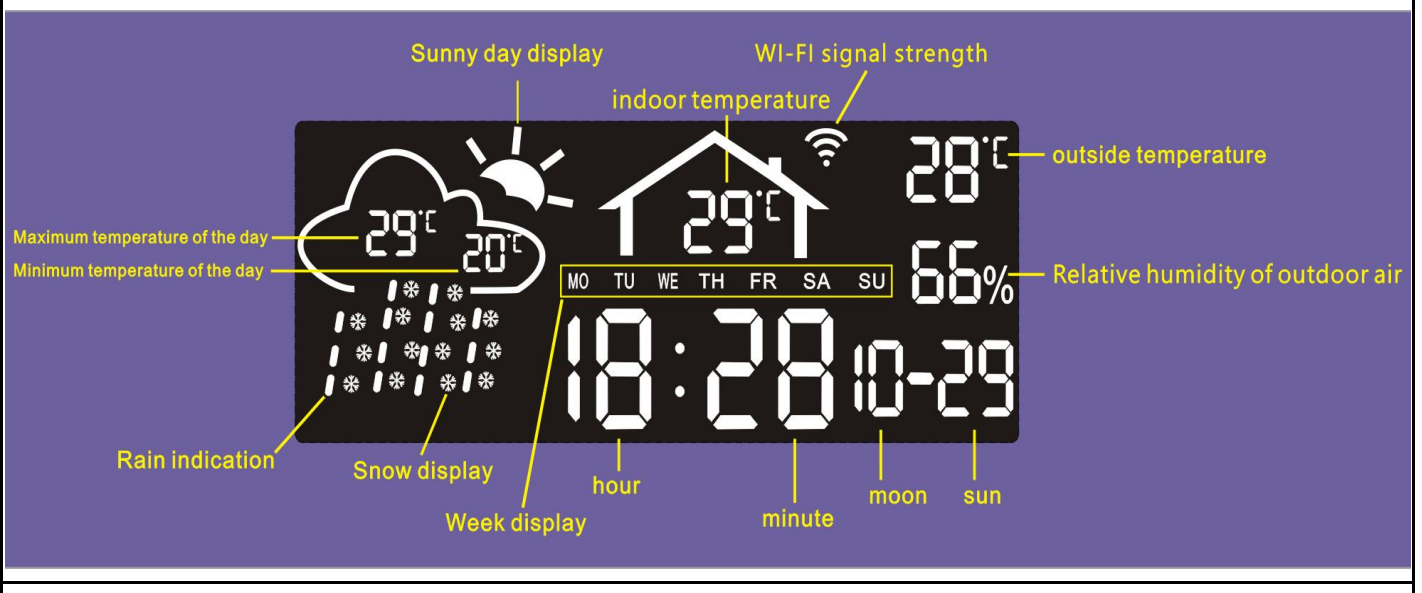
7. Click "Finish" ①, and the screen displays ②.



## 8. Presentation of renderings

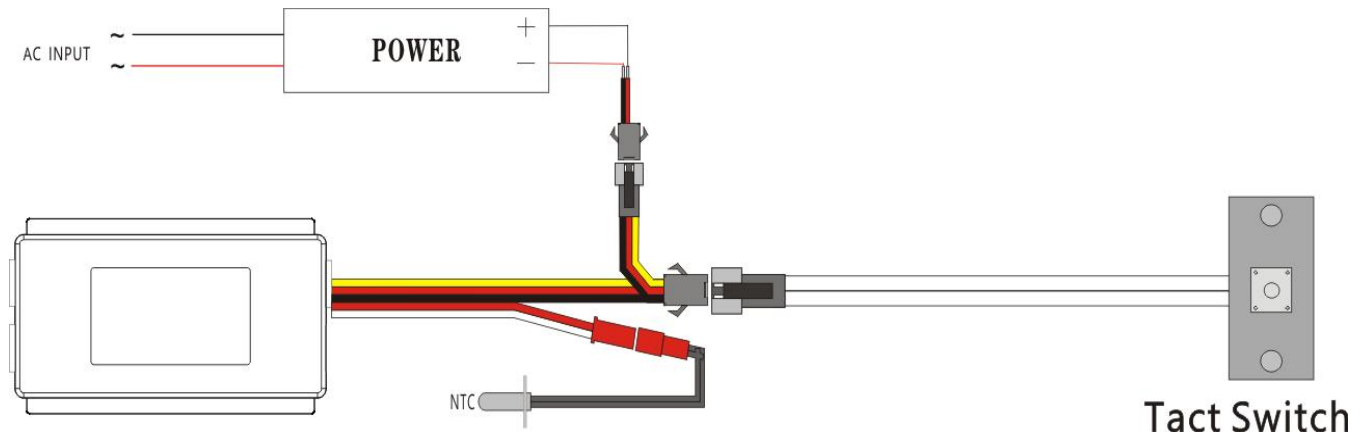


### III. Screen display:

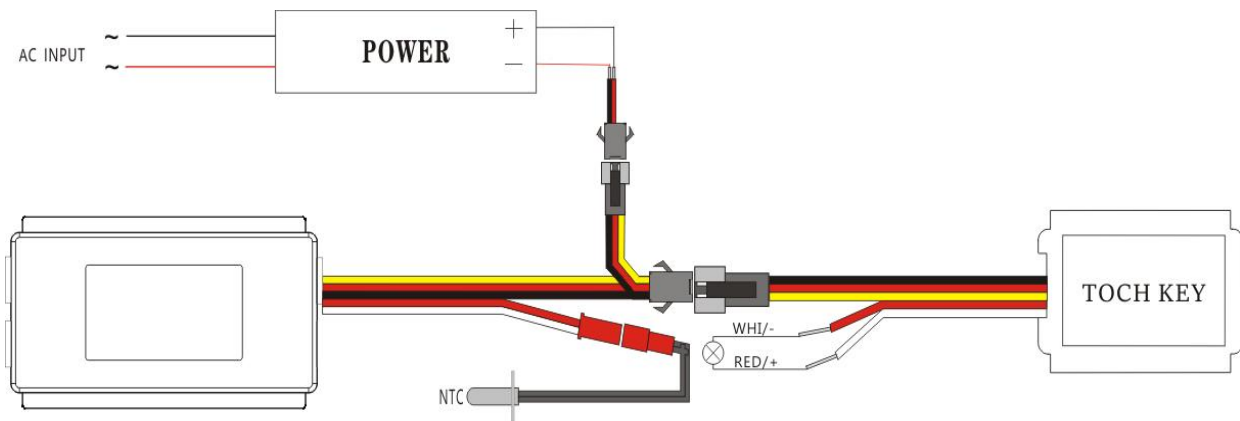


#### IV. Product wiring diagram:

Touch switch wiring diagram



Touch switch wiring diagram



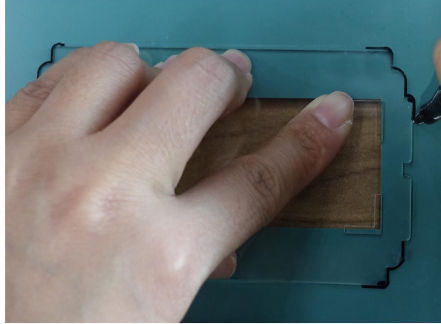
#### V. Laser marking drawing



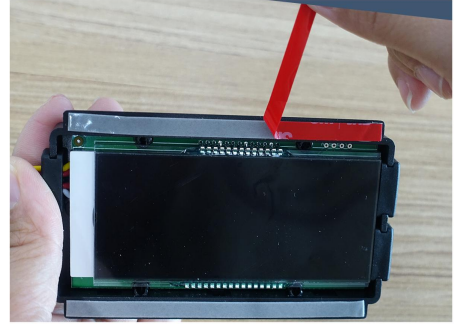
## VI. Installation Steps



1. Sand the mercury surface of the mirror or carve the icon of the switch button with laser.



2. Align the marking line of the positioning plate with the marking drawing, and draw the positioning line around with a pen to install the product;



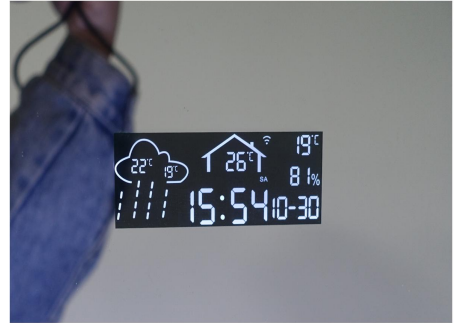
3. Tear off the screen protective film and double-sided adhesive protective film on the product surface to facilitate the next installation;



4. Stick and press the product on the positioning wire frame;



5. Re-fix the product with fixing glue.



6. The front of the product

22°C 19°C  
26°C 81%  
15:54 10-30