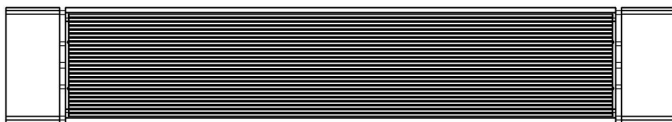


# INFRARED HEATER INSTRUCTION MANUAL



## SYMBOLS



### Warning

This signal word indicates a hazard with an average risk level which, if not avoided, can result in serious injury or death.



### Warning of electrical voltage

This symbol indicates dangers to the life and health of persons due to electrical voltage.

Symbols	Meaning
	This symbol located on the device indicates that it is prohibited to place objects (such as towels, clothes etc.) above or directly in front of the device. In order to avoid overheating and fire hazards, the device must not be covered.
	This symbol located on the device indicates dangers to the life and health of persons due to hot surface.
	This symbol located on the device indicates that it is prohibited to spray the device.
	This symbol located on the device and information marked indicates that operating manual must be observed.

## **CONTENT**

- 1 | WARNING & PRECAUTION
- 2 | FEATURES
- 3 | TECHNICAL INFORMATION
- 4 | SCOPE OF SUPPLY
- 5 | INSTALLATION
- 6 | TROUBLESHOOTING
- 7 | MAINTENANCE & SERVICING
- 8 | TECHNICAL ANNEX
- 9 | STORAGE
- 10 | DISPOSAL
- 11 | CONTROL MODES (Additional instructions)

## 1 | WARNING & PRECAUTION

**Read this manual carefully before starting or using the device. Always store the manual in the immediate vicinity of the device or its site of use!**

**Read all safety warnings and all instructions.**

Failure to follow the warnings and instructions may result in electric shock, fire and / or serious injury. Save all warnings and instructions for future reference.



### **Warning**

Do not mount those devices designed for wall only to ceiling !

Do not mount those devices designed for ceiling only to wall !

Or else it might cause over heat and burning.



### **Warning**

This appliance can be used by children aged from 8 years and above and persons with reduced physical, sensory or mental capabilities or lack of experience and knowledge if they have been given supervision or instruction concerning use of the appliance in a safe way and understand the hazards involved.

Children shall not play with the appliance. Cleaning and user maintenance shall not be made by children without supervision.



### **Warning**

Children of less than 3 years should be kept away unless continuously supervised.

Children aged from 3 years and less than 8 years shall only switch on/off the appliance provided that it has been placed or installed in its intended normal

operating position and they have been given supervision or instruction concerning use of the appliance in a safe way and understand the hazards involved.

Children aged from 3 years and less than 8 years shall not plug in, regulate and clean the appliance or perform user maintenance.



### **Warning**

Do not use the device in small rooms if persons are present who cannot leave the room independently and who are not under constant supervision.



### **Warning**

Some parts of this product can become very hot and cause burns. Particular attention has to be given where children and vulnerable people are present. Its dangerous of installation close to curtains and other combustible materials. To avoid the possibility of burns, the following people should be much more careful when using the heaters: infants and kids, people with sensitive skin, the old, the sick, people who is drunk, people who takes sleeping pills.

- Remove all the protective films(both on the front and on the back) before using.
- Be sure the input voltage is between 220-240V, 50Hz, and power supply has been strictly in accordance with IEC, left is null wire and right is live wire, and also well grounded.
- The devices will draw more current than small appliances, so a separate 15A socket is required.
- Do not use the device in potentially explosive rooms.
- Do not use the device in aggressive atmosphere.
- Set the device up in an upright and stable position.
- Let the device dry out after a wet clean. Do not operate it when wet.
- Do not use the device with wet or damp hands.

- Do not expose the device to directly squirting water.
- Never insert any objects or limbs into the device.
- Do not cover or transport the device during operation.
- Do not sit on the device.
- This appliance is not a toy! Keep away from children and animals. Do not leave the device unattended during operation.
- Check accessories and connection parts for possible damage prior to every use of the device. Do not use any defective devices or device parts.
- Ensure that all electric cables outside of the device are protected from damage (e.g. caused by animals). Never use the device if electric cables or the power connection are damaged!
- The electrical connection must correspond to the specifications in chapter Technical data.
- Insert the mains plug into a properly secured mains socket.
- Do not use the device when the socket or wire overloaded.
- Observe the device's power input, cable length and intended use when selecting extensions to the power cable. Completely unroll extension cables. Avoid electrical overload.
- Before carrying out maintenance, care or repair work on the device, remove the mains plug from the mains socket. Hold onto the mains plug while doing so.
- Switch the device off and disconnect the power cable from the mains socket when the device is not in use.
- Do not under any circumstances use the device if you detect damages on the mains plug or power cable. If the supply cord is damaged, it must be replaced by the manufacturer, its service agent or similarly qualified persons in order to avoid a hazard. Defective power cables pose a serious health risk.
- During the installation of the device observe the minimum distances from walls and other objects as well as the storage and operating conditions specified in the Technical data chapter.
- Never drill into the heating device.
- Do not use the device in immediate proximity to curtains.
- Do not place the device on combustible ground.
- Do not transport the device during operation.

- Do not touch the surface during the device working to avoid burns.
- Allow the device to cool down before transport and / or maintenance work.
- Do not use this device near bathtubs, shower trays, swimming pools or other water containers. Risk of electric shock!
- The device must be placed where the switches and controllers cannot be touched by a person in a bathtub or shower.
- Do not use this device in a child-care centre and bathroom.(Only for Sweden)

2
|
FEATURES

- The device is designed to provide an efficient, comfortable and healthy heating system for any domestic users.
- These devices can reduce air circulation and help to maintain a clean, silent, dust free environment.
- A wide range of devices available in a huge choice of colors, sizes and styles.

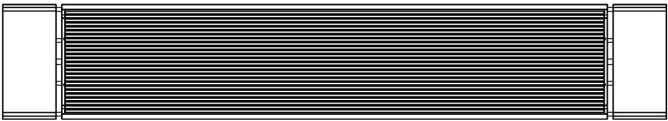
3
|
TECHNICAL INFORMATION

Input Voltage	AC 220-240V/50Hz
Heating element	Stainless steel heating tube
Surface temperature	330-350°C
Surface Material	Aluminum with graphene coating
Back Material	Aluminum Sheet
Power cord length	1.9m
Color	White/Black

Model NO.	Size(mm)	Heating Power(W)	LED Power(W)
IGTY4-1CG0602-L	866*220	1000	40
IGTY4-1CG0802-L	1126*220	1500	40
IGTY4-1CG1002-L	1266*220	1800	40

IGTY4-1CG1202-L	1546*220	2400	40
IGTY4-1CG1502-L	1816*220	3000	40
l=built-in temperature control; Y4=Remote thermostat; L=LED light			

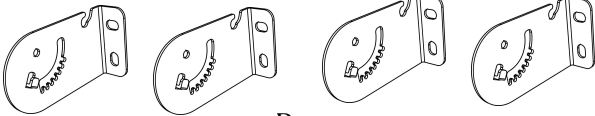
4 | SCOPE OF SUPPLY



A



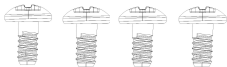
L



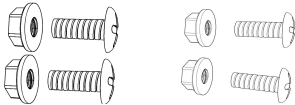
B



K

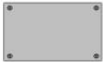


C

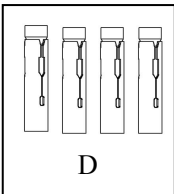


F

G

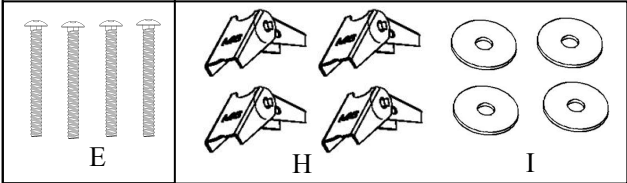


J



D

applied to concrete  
ceilings



E

H

I

applied to gypsum  
board ceilings

<b>A: Infrared heater ×1</b>	<b>B: Articulating brackets ×4</b>
<b>C: Phillips round-head screws ×4</b>	<b>D: Metal expansion tubes ×4</b>

E: Phillips flat head screws ×4	F: Flange nut kits ×2 (M5)
G: Flange nut kits ×2 (M3)	H: Spring Toggles x 4
I: Washers x 4	J: Drilling template ×1
K: Manual ×1	L: Thermostat × 1

**Tips:** D and E are applied to concrete ceilings, whereas H, I and E are used on gypsum board ceilings.

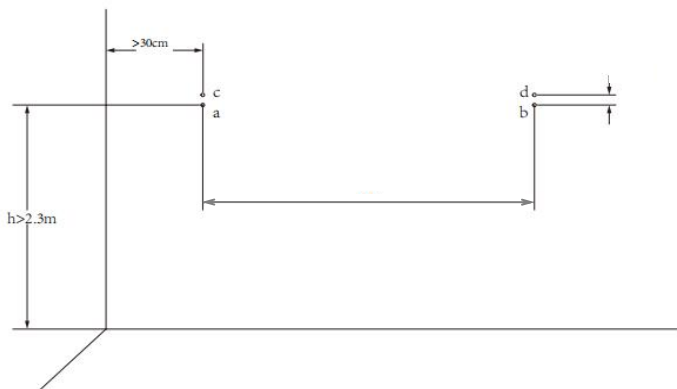
## 5 | INSTALLATION

**Make sure remove all the protective films(both on the front and back)!**

### Instruction for Wall Mounting

1. Secure the mounting template onto the wall, accurately identifying the corresponding hole positions, and mark the hole locations on the wall for drilling purposes. (Alternatively, you can determine the drilling positions by measuring the distances ab and ac.)

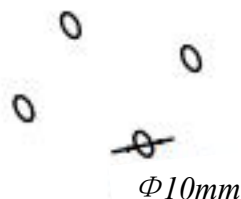
*Note: Install the device at least 2.3m above the floor.*



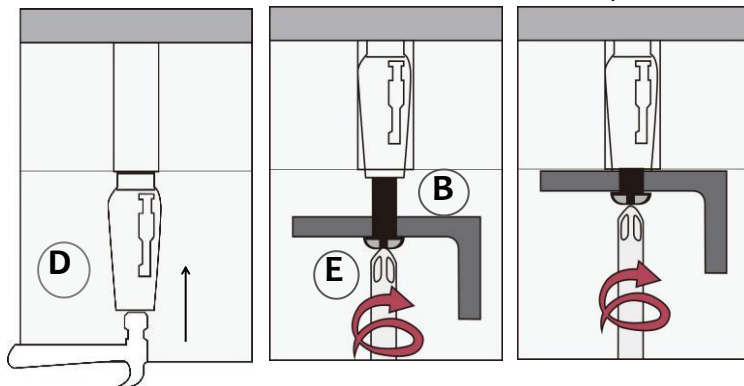
2. Drill 4×10mm holes at the marked positions.



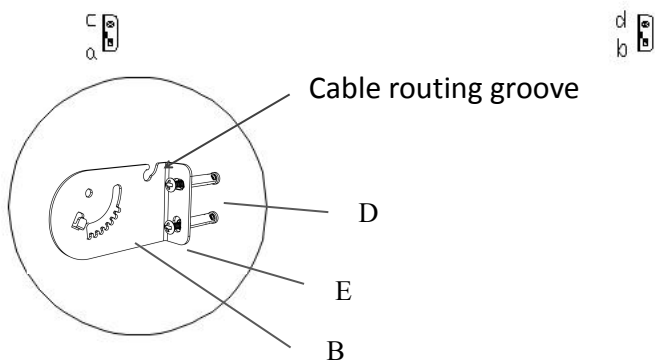
*Excessive drilling diameter is strictly prohibited !*



3. Insert the metal expansion tubes(D) into the drilled holes.
4. Thread the screw(E) through the holes in the two articulating brackets ( B ) , then secure them into the metal expansion tubes(D).



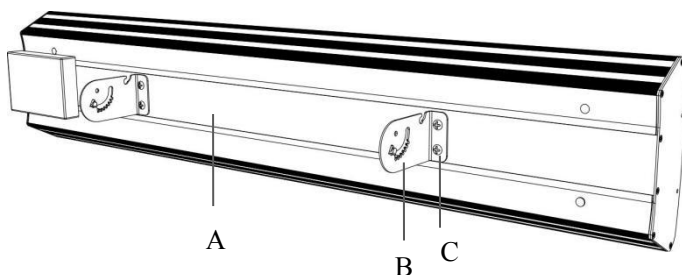
**!** *The expanding nut goes into the inside of the hole , it is strictly prohibited to install it in reverse!*



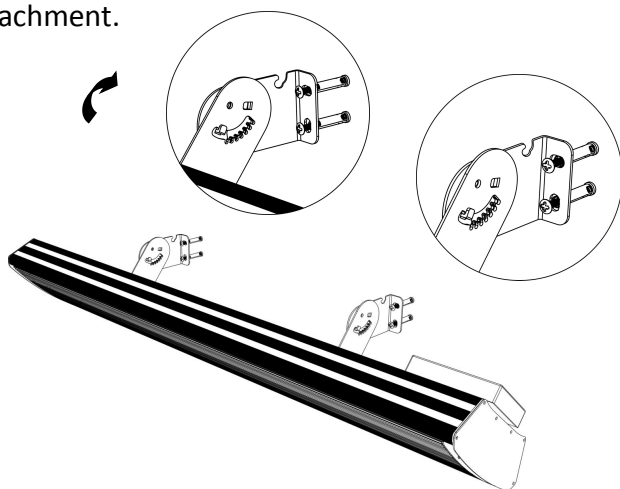
*Note: The cable routing groove on the brackets(B) should face up during installation.*

5. Align the two articulating brackets (B) with the pre-drilled holes (A) on the back of the device, ensuring that both brackets are oriented in the same direction. Secure each bracket firmly using screws (C).

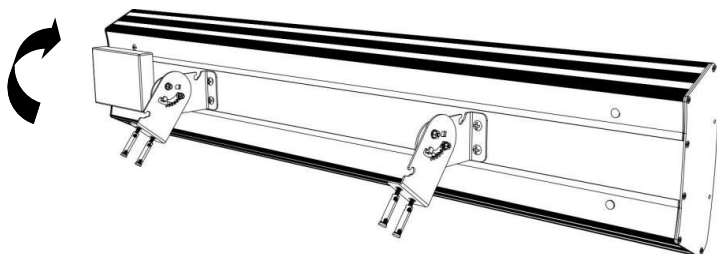
*Note: The cable routing groove on the brackets(B) should face upward.*



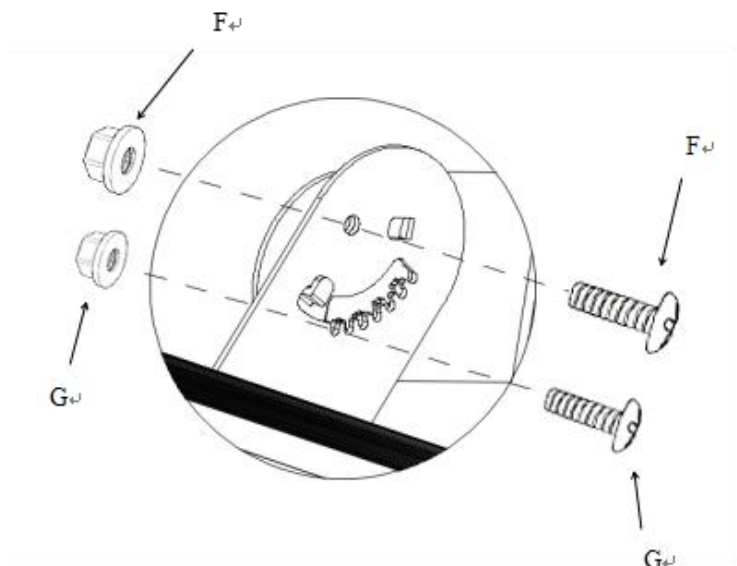
6. Interlock the hanging tabs on the two articulating brackets (B) attached to device (A) with the hanging tabs on the corresponding two brackets (B) on the wall. Pass them through the slotted holes and secure them firmly. Afterward, gently shake the unit to ensure there is no detachment.



7. Securely engage them through the slotted holes, enabling slight rotational adjustments of the product to different positions.



8. Insert the flange nut kits(F) through the pivot hole, securing it with a nut. Next, pass the flange nut kits(G) through the U-shaped groove, adjust it to the desired angle, and secure it by tightening the nut.



### **Instruction for Ceiling Mounting**

**Before starting the installation, please make sure to determine the material of the ceiling.** The following are the installation methods for **concrete ceilings** and **gypsum board ceilings**. Please choose and use appropriate accessories based on the specific situation.

#### **a. Concrete ceiling Installation**

For the installation method of concrete ceiling, please refer to the wall mounting installation description above.

#### **b. Gypsum boards ceiling Installation**

1. Following Step 5 in the wall mounting installation method, secure the articulating bracket onto the back of the product.
2. Following Step 1 in the wall mounting installation method, mark the

drilling positions.

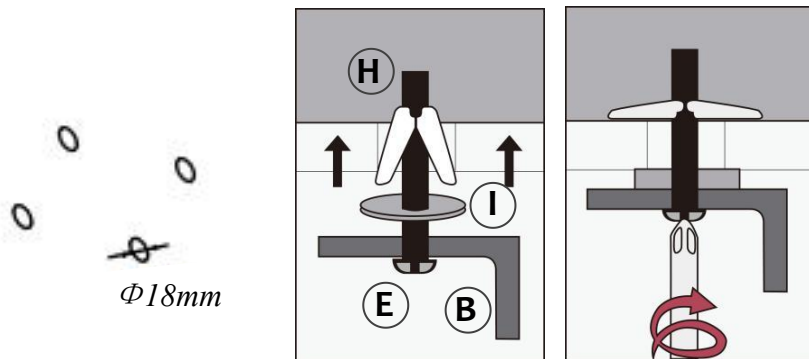
3. Drill 4×18mm holes at the marked positions.



*Excessive drilling diameter is strictly prohibited !*

4. Thread the screws(E) through the hole in the articulating brackets(B), the washer(I), and the spring toggle(H). Then insert the spring toggle into the pre-drilled hole.

*Note: The groove on the brackets(B) should face up during installation.*



5. Tighten the screws.

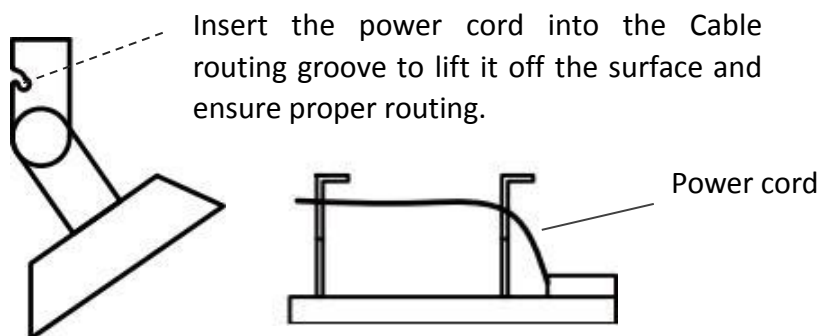
6. Following Step 6, 7 and 8 in the wall mounting installation method, securely affix the infrared heater to the wall, completing the installation.



**WARNING:**

- *To mitigate errors, please measure all dimensions before proceeding with the installation.*
- *Install this product at a minimum height of 2.3 meters above the ground level.*
- *The articulating brackets must be securely fastened with bolts before connecting the heater to the fixed electrical circuit.*
- *The heater must be installed within a distance of less than 190cm from a properly grounded outlet. Do NOT use an extension cord.*

## **Power Cord Placement Tip:**



Do not place the power cord on the back of the product!

## **6 | TROUBLESHOOTING**

<b>Problem</b>	<b>Reason</b>	<b>Measure</b>
It has noise when original charged with electricity	Due to the structure stress of the heat insulator.	It is a normal phenomenon. Don't worry about it.
The surface of the heating device is slightly warm.	1. The voltage is low. 2. In a low-temperature environment.	1. Install a voltage regulator. 2. It is normal.

## **7 | MAINTENANCE & SERVICING**

### **Activities required before starting maintenance**



#### **Warning of electrical voltage**

Do not touch the mains plug with wet or damp hands.

- Hold onto the mains plug while pulling the power cable out of the mains socket.
- Allow the device to cool down completely.



### **Warning of electrical voltage**

Tasks which require the housing to be opened must only be carried out by authorized specialist companies.

### **Cleaning the device**



### **Warning of electrical voltage**

Never immerse the device in water!

Clean the device with a soft, damp and lint-free cloth. Ensure that no moisture enters the housing. Protect electrical components from moisture. Do not use any aggressive cleaning agents such as cleaning sprays, solvents, alcohol-based or abrasive cleaners to dampen the cloth.

Wipe the housing dry after cleaning

## **8 | TECHNICAL ANNEX**

### **Information requirements for models with remote thermostat**

Model	Nominal heat output/ (P <sub>nom</sub> )/ (KW)	Minimal heat output (indicative)/ (P <sub>min</sub> )/ (KW)	Maximum continuous heat output/ (P <sub>max.c</sub> )/ (KW)	At nominal heat output/ (el <sub>max</sub> )/ (KW)	At minimal heat output/ (el <sub>min</sub> )/ (KW)
IGTY4-1CG0602-L	1	1	1	N/A	N/A
IGTY4-1CG0802-L	1.5	1.5	1.5	N/A	N/A
IGTY4-1CG1002-L	1.8	1.8	1.8	N/A	N/A
IGTY4-1CG1202-L	2.4	2.4	2.4	N/A	N/A
IGTY4-1CG1502-L	3	3	3	N/A	N/A

Item	Unit
<b>Type of heat output/room temperature control (select one)</b>	
single stage heat output and no room temperature	[no]
Two or more manual stages, no room temperature	[no]
with mechanic thermostat room temperature control	[no]
with electronic room temperature control	[no]
electronic room temperature control plus day timer	[no]
electronic room temperature control plus week timer	[yes]
<b>Other control options (multiple selections possible)</b>	
room temperature control, with presence detection	[no]
room temperature control, with open window detection	[yes]
with distance control option	[no]
with adaptive start control	[no]
with working time limitation	[yes]
with black bulb sensor	[no]
self-learning functionality	[no]
control accuracy	[no]

## 9 | STORAGE

When the device is not being used, observe the following storage conditions:

- dry and protected from frost and heat
- in an upright position where it is protected from dust and direct sunlight
- with a cover to protect it from invasive dust, if necessary
- Place no further devices or objects on top of the device to prevent it from being damaged.



The icon with the crossed-out waste bin on waste electrical or electronic equipment stipulates that this equipment must not be disposed of with the household waste at the end of its life. You will find collection points for free return of waste electrical and electronic equipment in your vicinity. The addresses can be obtained from your municipality or local administration.

The separate collection of waste electrical and electronic equipment aims to enable the re-use, recycling and other forms of recovery of waste equipment as well as to prevent negative effects for the environment and human health caused by the disposal of hazardous substances potentially contained in the equipment.

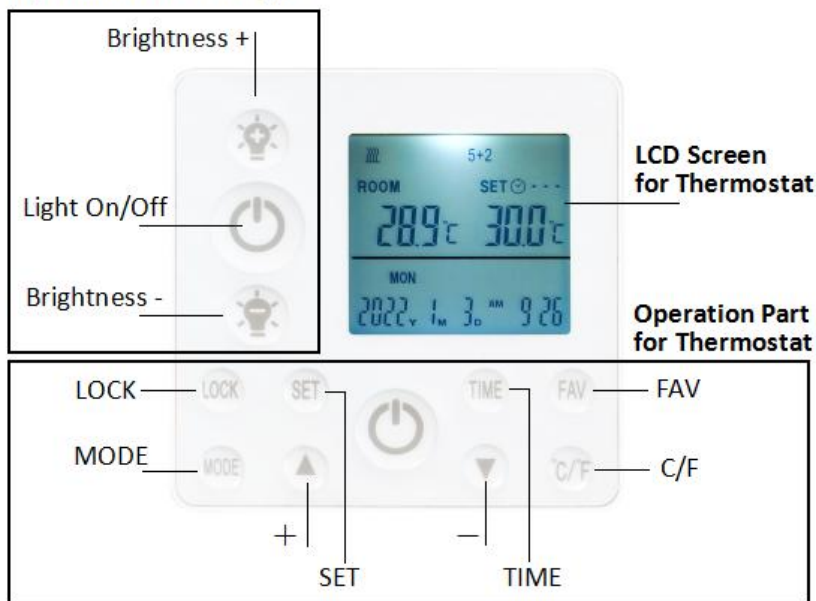
## 11 | CONTROL MODES (Additional instructions)

### Specification

- Battery-powered: DC 4x 1.5V AAA batteries (not included)
- Set temperature range: 5°C~ 35°C, resolution: 1°C
- Room temperature range: 0°C~ 50°C, display resolution: 0.1°C
- Accuracy of the measured temperature:  $\pm 0.5^{\circ}\text{C}$
- Working environment range 1°C~ 50°C
- Radio frequency 433.92MHz

### Description

#### Operation Part for Light



1. This thermostat also includes individual operation part for LED light.
2. The thermostat acquires the room temperature with its integrated sensor and transmit signal to the panel to turn on/off heating as the ambient temperature changing, in order to maintain a constant room temperature. When the ROOM temperature is 0.5°C higher than the SET temperature, thermostat will send OFF commands to panel;

When the ROOM temperature is 0.5°C lower than the SET temperature, thermostat will send ON commands to panel to turn on heating function.

3. The screen display shows the setting temperature as well as the measured temperature, time, date, modes etc.
4. The thermostat has week programmable、 temperature setting、 auto-off when temperature jump、 favorite temperature 、 time setting functions etc.
5. It is powered by 4pcs of 1.5V AAA batteries. Please change with new ones if the battery symbol gets flashing, or else it will not be able to control the panel.
6. Keypad locking function is designed to prevent the children from misusing.
7. LCD screen powered off means only the panel heating power off, the remote control itself is still under working state until batteries dead/out or broken.
8. The LCD screen only can work in temperature range from 1°C~ 50°C.

### **Operation Instructions of Heating Function**

#### **Pair the thermostat with the heating device**

Plug the panel into power socket, press ON/OFF for thermostat, then press button °C/°F and MODE buttons at same time to pair the thermostat with panel until a long beep sound heard.

#### **NOTES:**

- 1) Pairing should be finished within 1 minute, or else you need to re-power on the device.
- 2) Please re-power on the panel if you want to pair the device with another thermostat.
- 3) One thermostat can be paired to and work with several panels at same time.
- 4) Before pairing please do power off those panels which you don't want to pair.

## Set the Time and Day

It is essential that the clock time and day are set accurately if you require your programmed events to start on time.

**Step 1.** Press and hold TIME button for 3 seconds until the Year of date flashing.


**Step 2.** Use ▲ or ▼ button to set the Year, then short press TIME to save and proceed with setting up Month/Day/Hours/Minutes in similar manner.

**Step 3.** Short press TIME button again to save and exit.

## Manually turn the thermostat ON/OFF

Press ON/OFF button to turn the thermostat on/off.

When thermostat is turned Off, the LCD will only display current room temperature reading.


When thermostat is turned On, users can press ▲ or ▼ button to increase or decrease the set temperature. If the set temperature is below room temperature, heating device is now OFF. If the set temperature is above room temperature, the thermostat goes ON and heating symbol  appears on the screen of thermostat, it is now supplying power to heating device.

*Tips:*

1) *The default setting temperature when the product starts up is 19°C.(in manual mode).*

2) *Setting temperature range: 5-35 °C.*

## Lock the buttons

Press and hold the LOCK button for 3 seconds until you see a lock icon  appearing. To unlock, repeat the steps above.

## °C/°F Display

Short press the C/F button to convert Celsius/Fahrenheit or Fahrenheit/Celsius.

## FAV Function

Press and hold FAV for 3 seconds until the setting temperature icon flashes, the default preferred temperature value is 24°C, which can be adjusted by pressing the ▲ and ▼ buttons, and short press FAV button to confirm.

In daily use, setting temperature will convert to favorite temperature when short press FAV button, short press again to switch back to the original setting temperature.

## Switch between manual mode, 5+2 mode, and 1...7 mode.

Default to manual mode, long press MODE button to switch to 5+2 mode, long press MODE button again to switch to 1...7 mode, long press MODE button again to switch back to manual mode, and repeat the cycle.

## How to Programme Your Thermostat?

Long press the SET button to enter the programming mode setting state. (long press again to exit)

*Notes: 1. Programming mode has a time-out limit whereby if no buttons are pressed within 8seconds, it reverts back to the main screen.*

*2. It must be set in 5+2 or 1-7 programming mode. In manual mode, long pressing SET button has no response.*

### 1) 5+2 Programming Mode

You can program the thermostat to fit your lifestyle — week and weekend, plus up to 4 groups of time interval per day.

**Step 1.** Once in 5+2 mode, Press and hold the SET button for 3-5 seconds until Program icon ① and MON TUE WED THU FRI is displayed with ON and Time Icon flashing on screen.

**Step 2.** Press ▲ button to adjust hour (+1hour/press) and press ▼ to adjust Minute(+5minutes/press) to set the starting time of Program ①.

**Step 3.** Press the SET button once and OFF icon flashing on screen,

Use ▲ Button to adjust hour (+1hour/press) and press ▼ to adjust minute (+5minutes/press) to set the ending time of Program ①.

**Step 4.** Press the SET button once again and set temperature icon flashing on screen, Use ▲ or ▼ button to set the desired temperature to be maintained for program ①.

*Tips:*

1) *Setting temperature range:5-35 °C*

2) *Short press the FAV button to choose your favorite temperature value.*

**Step 5.** Press the SET button to bring up Program ② of week days , repeat Step 2-5. And users can set up Program ③ and ④ in similar manner.

**Step 6.** After finishing setting Program ④, press the SET button to bring up SAT and SUN setting, repeat step 2-5 to set Program ① ② ③ ④ of weekends.

## 2) 1-7 Programming Mode

You can program the thermostat everyday with setting 2 groups of time interval per day.

Once in 1-7 Mode, Press and hold the SET button for 3-5 seconds until Program icon ① and MON is displayed with ON and Time icon flashing on screen, users can follow the above step 2-4 to set On/Off time and desired temperature of Program ① and ② from Monday to Sunday in sequence.

*Tips:*

1) *The default starting time , the ending time , and default temperature settings are detailed in the following table.*

MODE \ TIME			Starting time	Ending time	Default setting temperature (°C)
5+2	MON-FRI	1	00:00	06:30	17
		2	06:30	08:45	19
		3	08:45	17:00	17
		4	17:00	22:30	19

	SAT-SUN	1	00:00	08:00	17
		2	08:00	14:00	19
		3	14:00	17:30	17
		4	17:30	23:15	19
1...7	MON	1	06:30	17:00	17
		2	17:00	22:30	19
	TUE	1	06:30	17:00	17
		2	17:00	22:30	19
	WED	1	06:30	17:00	17
		2	17:00	22:30	19
	THU	1	06:30	17:00	17
		2	17:00	22:30	19
	FRI	1	06:30	17:00	17
		2	17:00	22:30	19
	SAT	1	08:00	14:00	19
		2	17:30	23:15	19
	SUN	1	08:00	14:00	19
		2	17:30	23:15	19

2) The device can still be turned on and off or the temperature can be set normally during weekly timer on.

3) When programming, please don't set overlapped intervals between workgroups. If the time periods overlaps, the group with an earlier starting time will be executed ON first, and the group with an earlier ending time will be executed OFF, until the next group turns on.

4) The programmed time / temperature setting will be restored with the next program entry in the memory.

5) Once finish setting up the programming mode, the thermostat will work under programming mode ON even if the thermostat is turned off. The heating device will be switched ON or OFF according to the programming setting.

## **Open Window Detection**

The thermostat will automatically turn off the heating device if a sudden drop in temperature in the room is detected.

### **Notes**

1. The date and time need to be reset after battery replaced. No reprogramming required.
2. Alkaline battery is recommended. If ALL buttons on the thermostat are not working, try replacing the batteries.
3. Please do change the batteries with new ones once the screen battery symbol gets flashing, or else it may result in halted/stuck/not working.
4. Check if set temperature is higher enough than room temperature first if the heating can not be turned on by thermostat.
5. If users want the week timer and temperature work, make sure it has been switched to 5+2 or 1...7 mode; If users want it not working, switch to manual mode.
6. Do not cover or touch the temperature sensor which is at the top of the thermostat.
7. Do put the thermostat in a open normal room environment rather not inside a drawer/pocket or under pillow/quilt etc.
8. Please do take out the batteries from the thermostat if long time no use.

## **Operation Instructions of LED Lighting Function**

1. Once thermostat is paired with device, Press ON/OFF button for LED light to turn on/off the led light surrounding the panel, and long press ON/OFF button to switch light color (Cold Light—Warm Light—Nature Light if available).
2. Press +/- to adjust the brightness, short press can adjust brightness to 100%, 75%, 50% and 25%, long press can adjust from 100% to 5%.